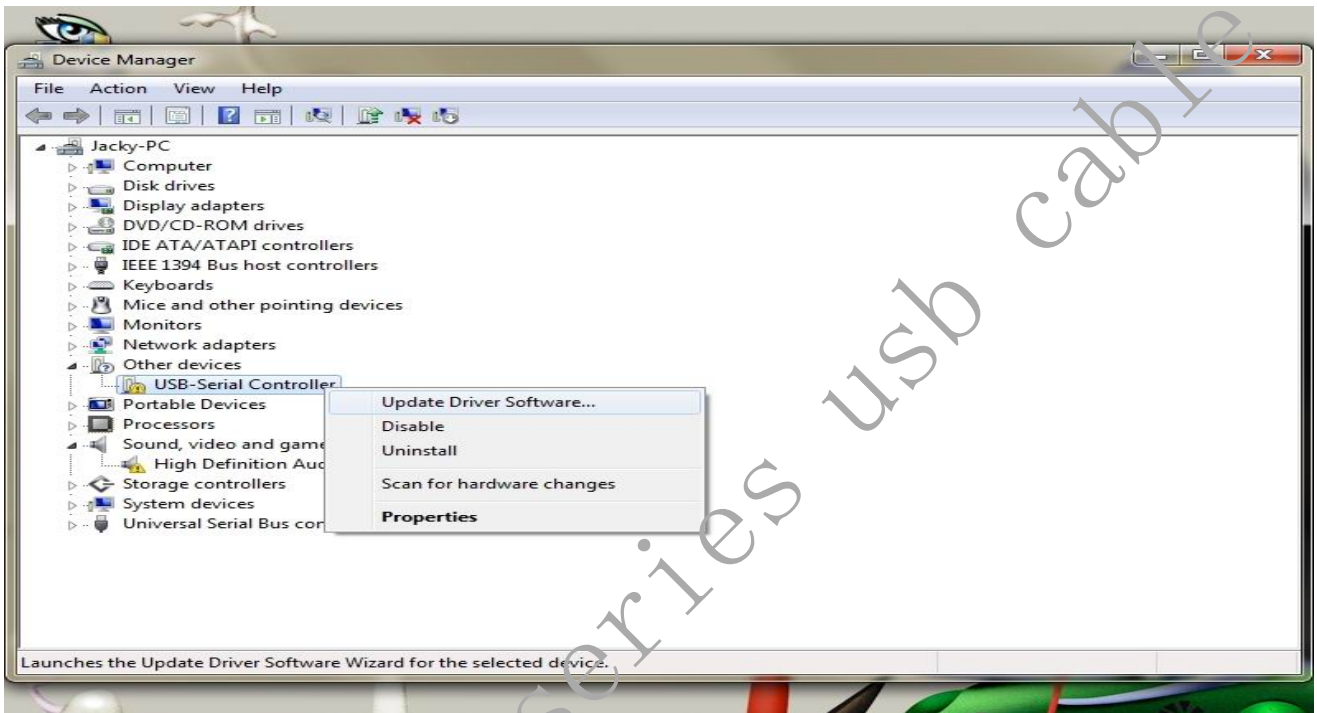


USB cable User Installation Manual v1.0

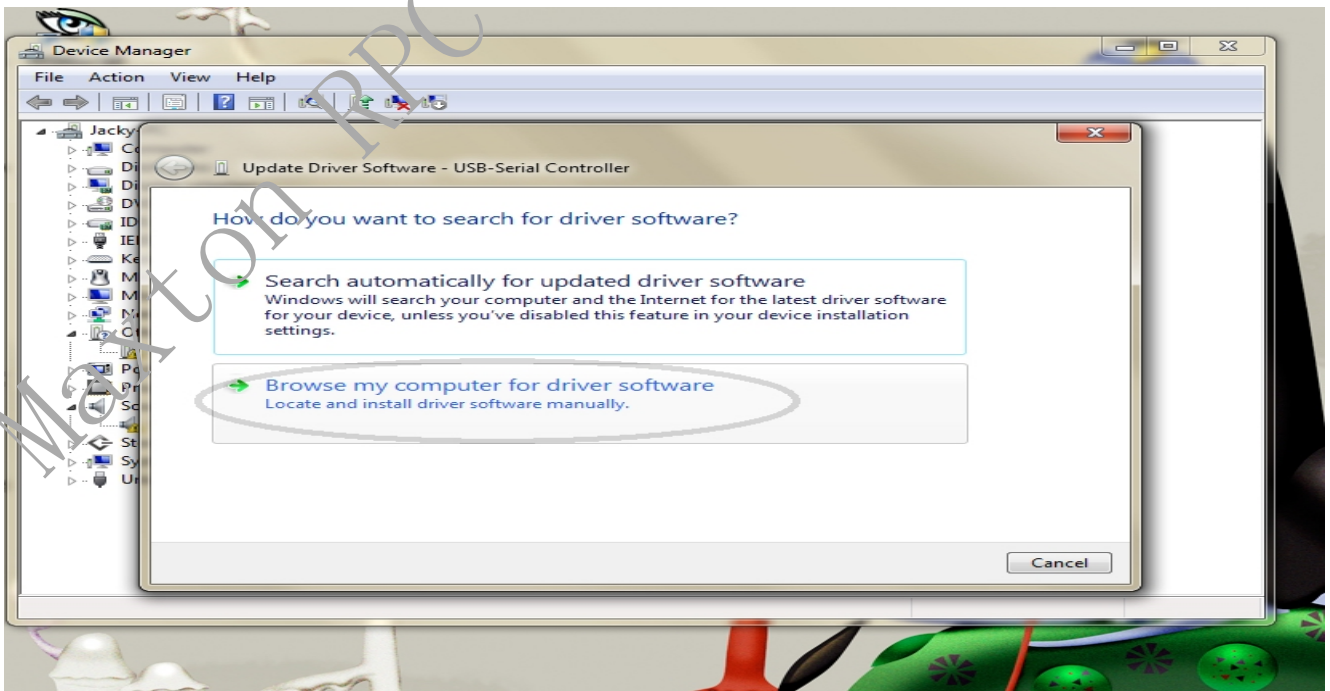
For Windows win7

(Dec/2009) J

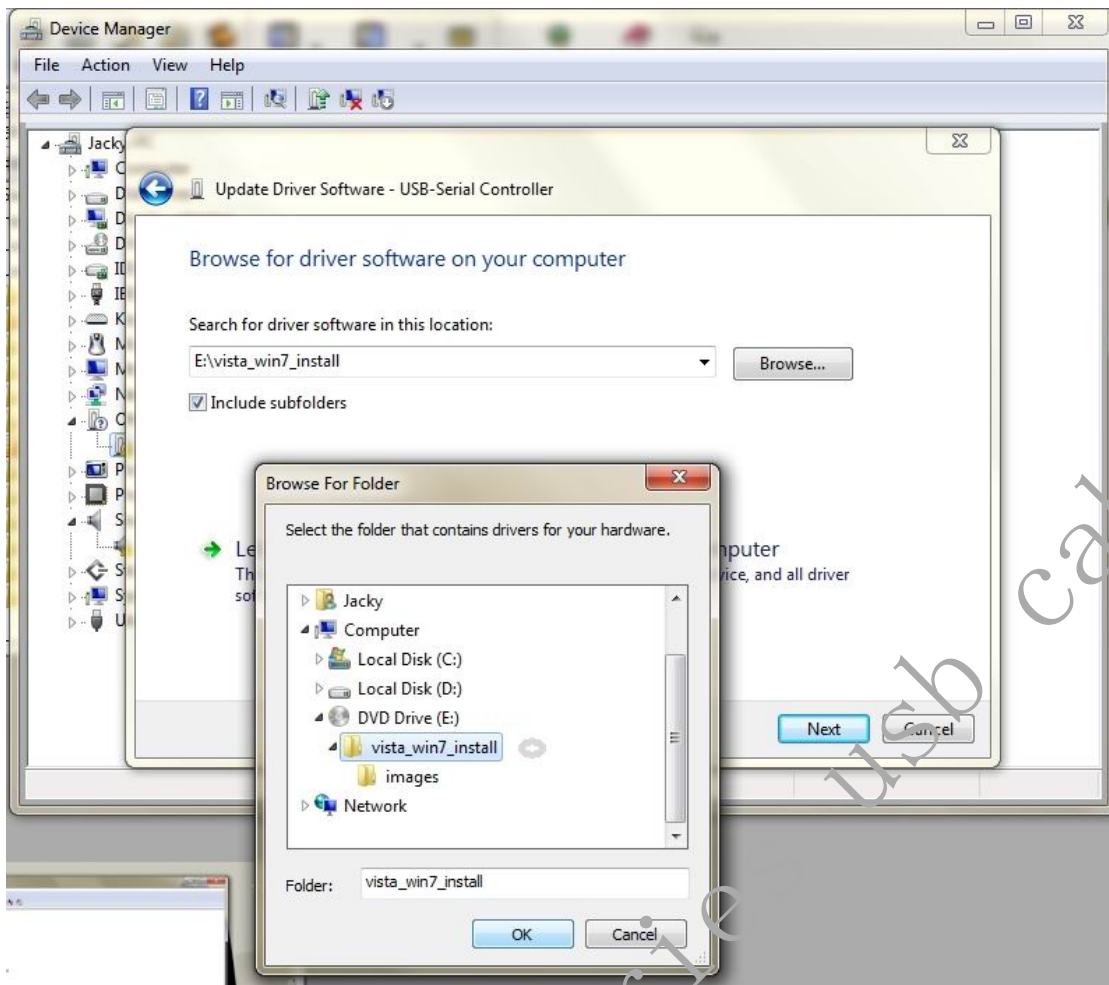
- 1.Power on your computer and boot to Windows.
- 2.Locate the USB port of your computer and plug in the USB cable,and open Device Manager.
Windows will detect the new device (USB-Serial Controller)
- 3.right click USB-Serial controller→Update Driver Software



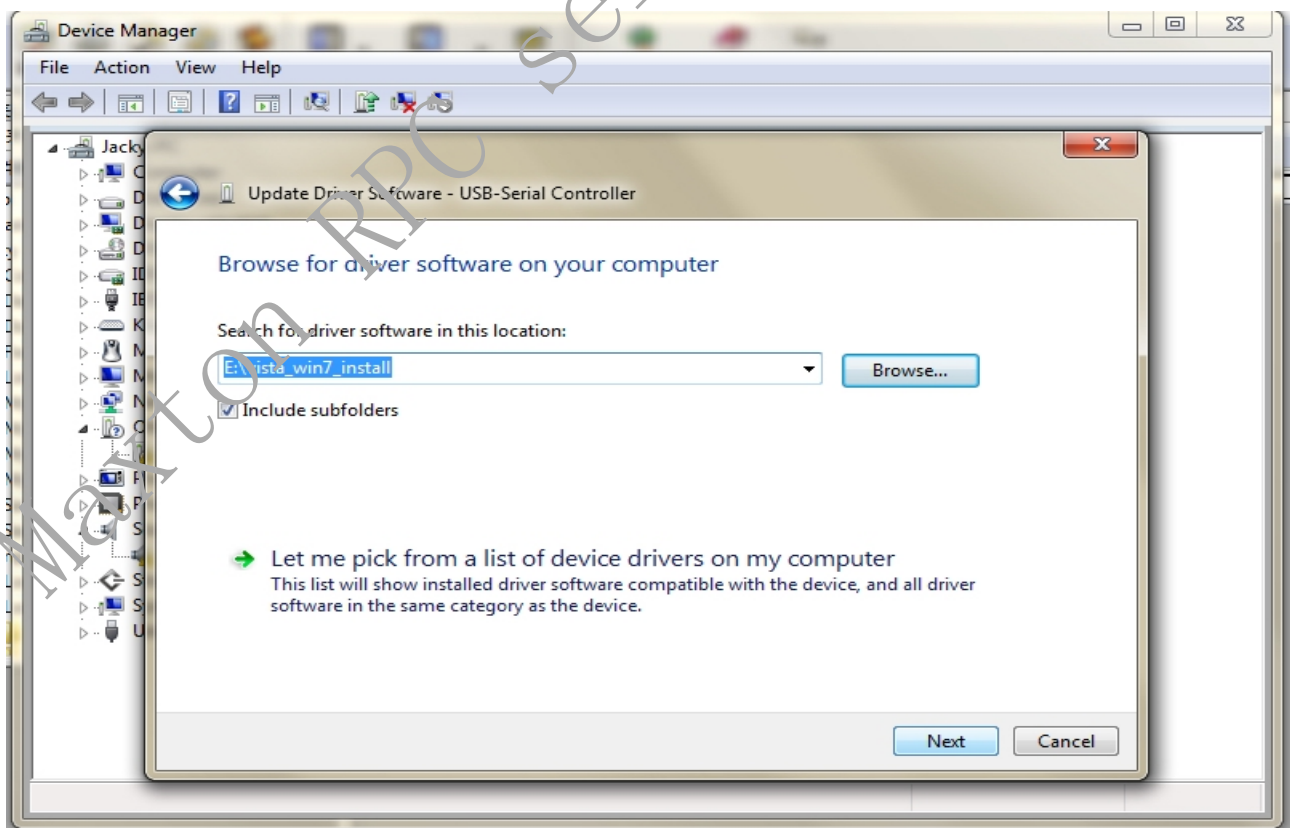
- 4.select Browse my computer for driver software



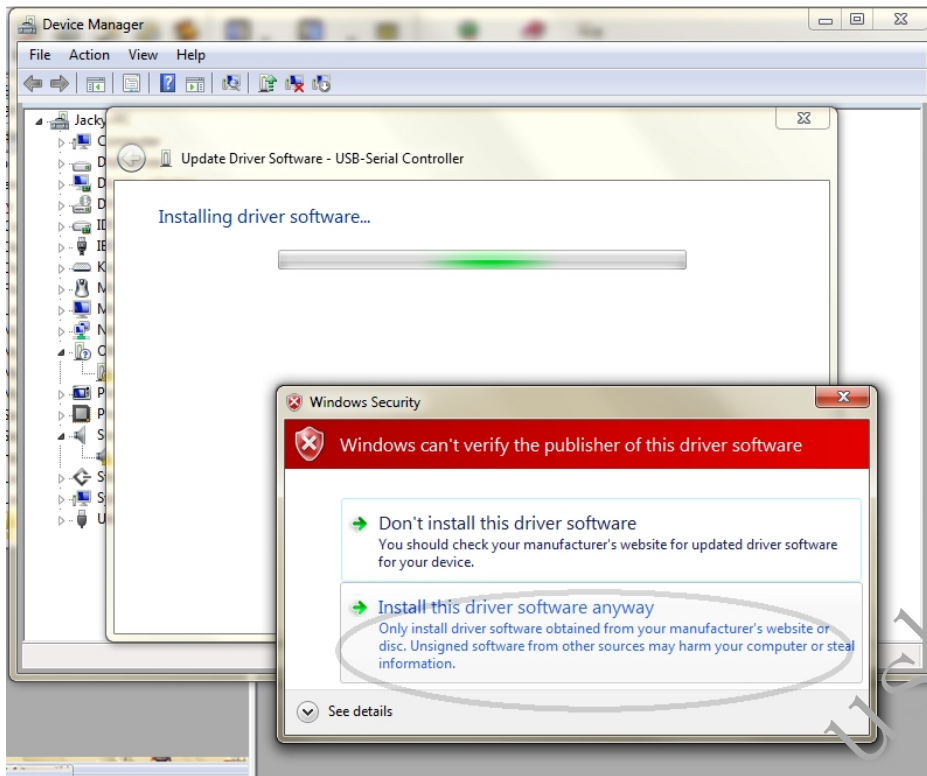
5.click Browse... ,select win7 driver



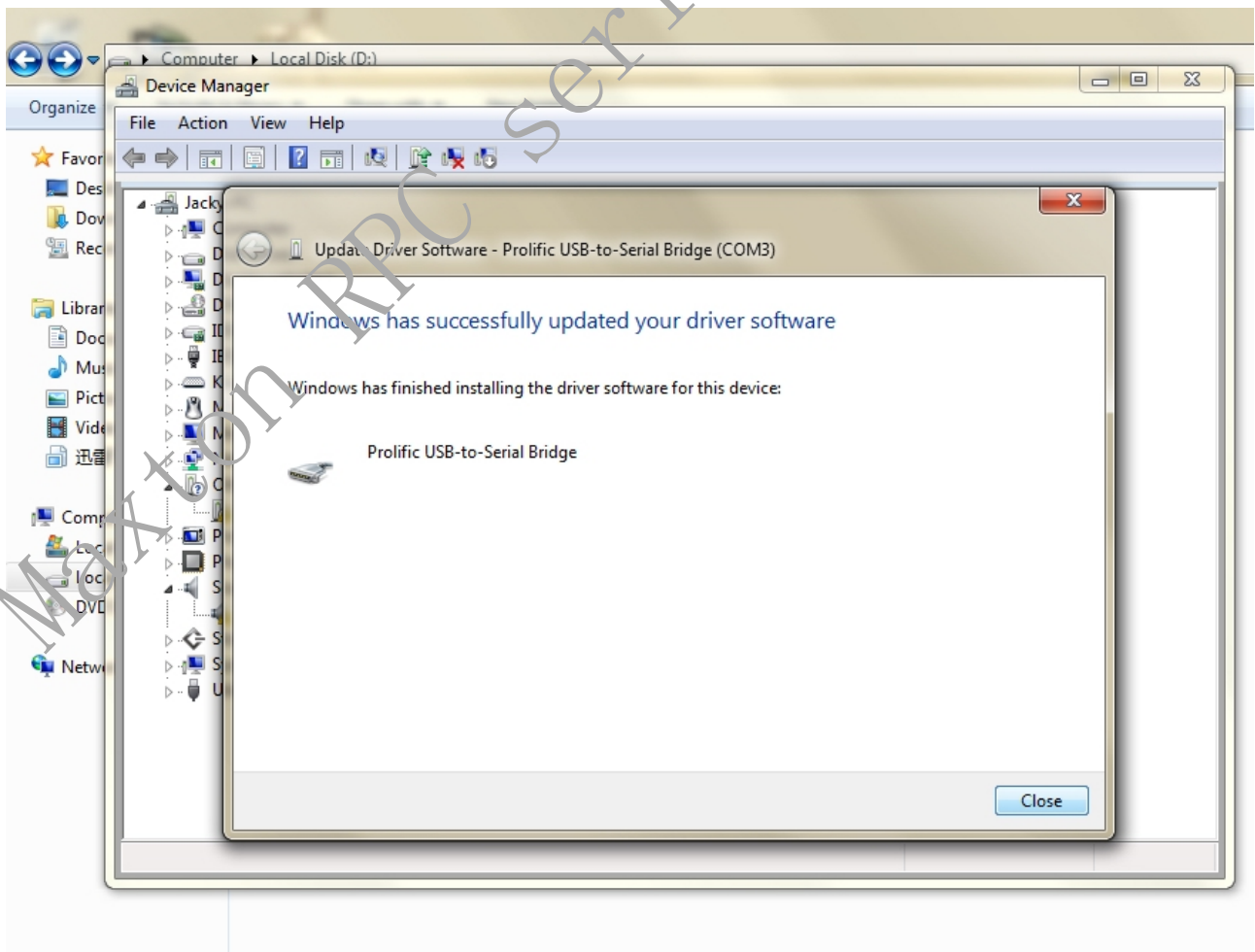
6.click Next



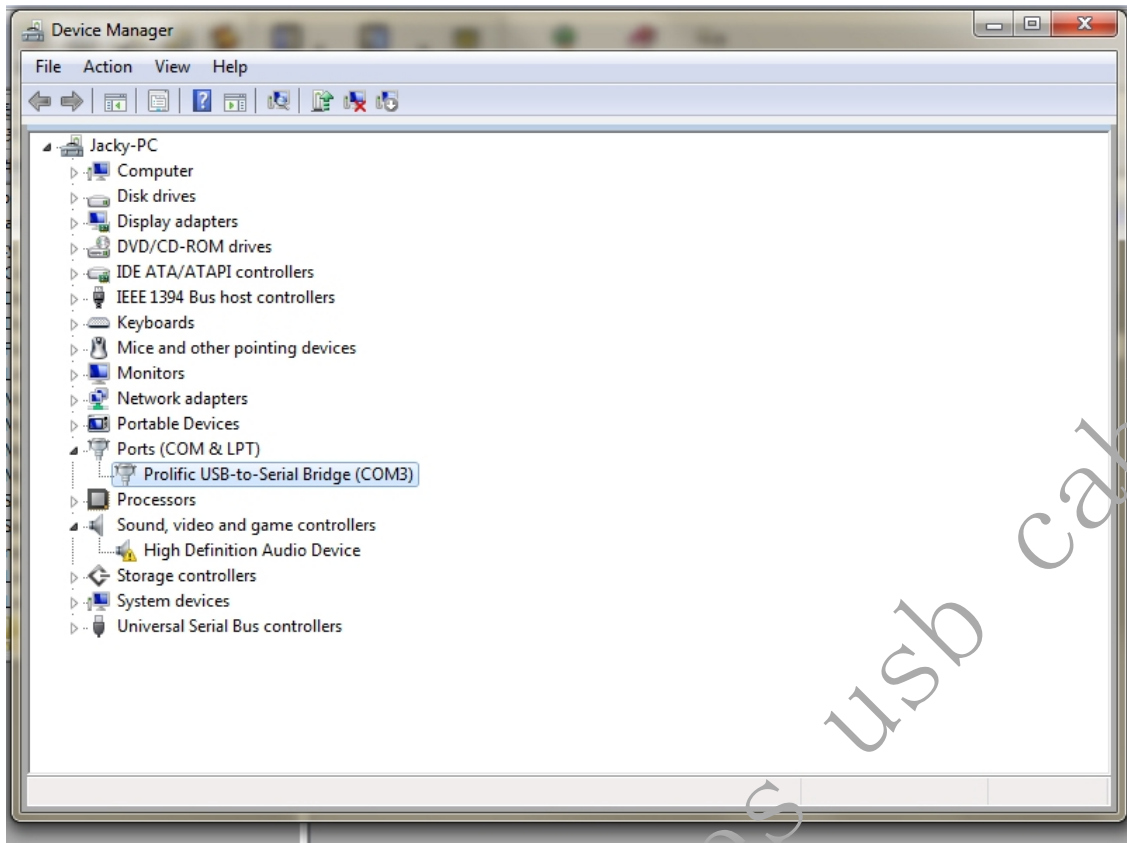
7. Windows will show a dialog box, select **Install this driver software anyway**



8. install successfully



9. Verifying the Installation



You should see the Prolific USB-to-Serial Comm Port (COM *) device listing. This also means that Windows has assigned the device to COM * port.